



## The TWIN CESSNA Flyer™

# Engine & Systems Seminar

**When:** November 10 - 13, 2011

**Where:** Continental Motors Factory in Mobile, AL

\_\_\_\_\_Twin Cessna's have complex systems and powerplants. The best owners and pilots have an intimate knowledge of how their airplanes are constructed and how they operate. Join fellow Twin Cessna pilots, owners and maintenance technicians at the Continental Motors Factory in Mobile, AL on Nov. 10 - 13th and get detailed knowledge about your airplane engines and systems. **It will make you a safer pilot as well as allow you to operate your Twin Cessna more cost effectively.** Over 1,000 owners and operators have attended these seminars in the past. You will not be disappointed.

Engine Seminar Nov. 10 - 11	Systems Seminar Nov. 12 - 13
<p>Topics Covered:</p> <ol style="list-style-type: none"><li>1. Engine Nomenclature</li><li>2. Engine Cooling</li><li>3. Ignition</li><li>4. Engine Oil</li><li>5. Periodic Maintenance</li><li>6. Fuel Injection</li><li>7. Turbocharging &amp; Exhaust</li><li>8. Engine Support Structure</li><li>9. Engine Overhaul &amp; Repair</li><li>10. Engine Operations</li></ol>	<p>Topics Covered:</p> <ol style="list-style-type: none"><li>1. Introduction</li><li>2. Landing Gear</li><li>3. Fuel System</li><li>4. Electrical System</li><li>5. Environmental Systems<ol style="list-style-type: none"><li>a. Heater &amp; AC</li><li>b. Pressurization</li></ol></li><li>6. Flight Controls</li><li>7. Type Certificates</li><li>8. Corrosion</li></ol>
<p>This seminar covers TCM O-470 through IO-550 and TSIO-470 through GTSIO-520 engines.</p>	<p>All 300 and 400 series piston-powered Cessna's are covered</p>

***“Attending the TTCF seminars was the smartest thing I’ve done in all my years of Twin Cessna ownership.” – Robert (T310R owner)***

## Mobile, AL Downtown Airport (KBFM)



The Continental Motors Factory is located on the north side of the airport at:\



Continental Motors  
2039 South Broad St.  
Mobile, Alabama 36615

### **When?**

Nov. 10 - 13, 2011. Thursday and Friday the 10th and 11th will be the Engine and Operational Procedures Seminar. Saturday and Sunday the 12th and 13th will be the Systems Maintenance and Operational Procedures Seminar. Classes start at 8:AM local time on all four days. We will be finished by approximately 5:00 PM on Thursday, Friday, Saturday, and no later than 4:00 PM on Sunday.

### **Who?**

We offer this seminar to any active member of The Twin Cessna Flyer owner's organization. This program is directed at owners, pilots, and maintenance technicians. Your spouse, mechanic or aircraft partner can attend with you at 1/2 full price as long as the two of you share books. Anyone who has attended a seminar in the last two years may attend the same seminar for a 25% discount provide you use your original set of books.

## **Accommodations**

You are responsible for your own accommodations and meals while at the seminar. Continental has discounts with several area hotels:

Fairfield Inn & Suites Mobile Daphne/Eastern Shore  
12000 Cypress Way  
Spanish Fort, Alabama 36527 USA  
Phone: 1-251-370-1160

Courtyard Mobile Daphne/Eastern Shore  
13000 Cypress Way  
Spanish Fort, Alabama 36527 USA  
Phone: 1-251-370-1161

You can make reservations online using this link:

[http://cwp.marriott.com/mobsp/continentalmotors/continentalmotors\\_MOBSF.html](http://cwp.marriott.com/mobsp/continentalmotors/continentalmotors_MOBSF.html) Be sure to tell them you want the Continental Motors seminar rate.

## **Promise!**

We at The Twin Cessna Flyer will do anything and everything possible to gather and distribute any and all information that could possibly lead to safer and less costly operation of all twin Cessna aircraft. Both our engines and systems seminar course has been received very well by all who have attended previous courses. We will have the latest information on Service Bulletins and Airworthiness Directives.

Come see us for both seminars, get four great days of learning and save a bundle. See the accompanying sheets for additional information on both of the classes.

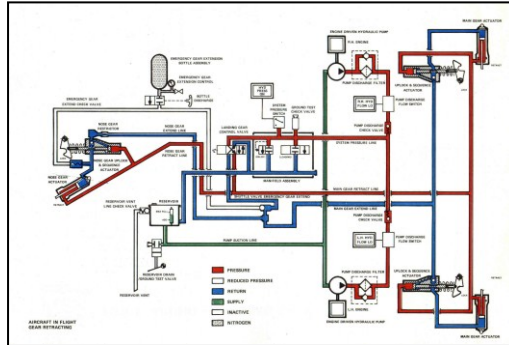
To sign up, visit [www.twinessna.org](http://www.twinessna.org) or just call 704-910-1790.

## **See you in Mobile!**



## ENGINE SEMINAR - DETAILED AGENDA

<p><b>1. Engine Nomenclature</b></p> <ul style="list-style-type: none"> <li>A. Engine Data Plates</li> <li>B. Engine Models</li> <li>C. Engine Specification Numbers</li> <li>D. Engine TBO</li> </ul> <p><b>2. Engine Cooling</b></p> <ul style="list-style-type: none"> <li>A. Engine Cowling</li> <li>B. Engine Baffle Seals</li> <li>C. Engine Oil</li> <li>D. Engine Ignition Timing</li> </ul> <p><b>3. Engine Ignition Systems</b></p> <ul style="list-style-type: none"> <li>A. Magnetos</li> <li>B. Magneto Maintenance</li> <li>C. Service Bulletins</li> <li>D. Airworthiness Directives</li> </ul> <p><b>4. Oil</b></p> <ul style="list-style-type: none"> <li>A. Engine Oil</li> <li>B. Military Specifications and Brand Names</li> <li>C. Proper Oil Levels and Change Intervals</li> <li>D. Oil Filters</li> <li>E. Oil Additives</li> </ul> <p><b>5. Periodic Maintenance</b></p> <ul style="list-style-type: none"> <li>A. Air Filters</li> <li>B. Oil Change Intervals</li> <li>C. Plug Rotation - Magneto Check</li> <li>D. Visual Inspections - Compression Check</li> </ul>	<p><b>6. Fuel Injection System</b></p> <ul style="list-style-type: none"> <li>A. The Fuel Injection System</li> <li>B. Fuel Screens</li> <li>C. Fuel Injectors - GAMI</li> <li>D. System Maintenance</li> <li>E. Fuel Additives</li> <li>F. Service Bulletins</li> </ul> <p><b>7. Turbo-Charging and Exhaust</b></p> <ul style="list-style-type: none"> <li>A. Turbo-Chargers</li> <li>B. Exhaust Systems</li> <li>C. Turbo Maintenance</li> <li>D. Exhaust Maintenance</li> <li>E. Service Bulletins</li> <li>F. Airworthiness Directives</li> </ul> <p><b>8. Engine Support Structure</b></p> <ul style="list-style-type: none"> <li>A. Engine Support Structure</li> <li>B. Engine Beams</li> <li>C. Canted Bulkheads</li> <li>D. Heat Erosion and Corrosion</li> <li>E. Service Bulletins</li> <li>F. Airworthiness Directives</li> </ul> <p><b>9. Engine Overhaul and Repair</b></p> <ul style="list-style-type: none"> <li>A. Cylinders</li> <li>B. Factory Re-manufactured</li> <li>C. Factory Overhauls</li> <li>D. After Market Overhauls</li> <li>E. Accessories</li> </ul> <p><b>10. Engine Operations</b></p> <ul style="list-style-type: none"> <li>A. Starting</li> <li>B. Normal and Emergency Operations</li> <li>C. Best Power</li> <li>D. Leaning</li> <li>E. Descent</li> <li>F. Shutdown</li> </ul>
---	---



## SYSTEMS SEMINAR - DETAILED AGENDA

<p><b>1. Introduction</b></p> <ul style="list-style-type: none"> <li>A. Systems related accident data</li> <li>B. Course Overview</li> </ul> <p><b>2. Landing Gear</b></p> <ul style="list-style-type: none"> <li>A. Understanding the system             <ul style="list-style-type: none"> <li>1) Electromechanical</li> <li>2) Hydraulic</li> </ul> </li> <li>B. Maintenance Requirements             <ul style="list-style-type: none"> <li>1) AD's and SB's</li> <li>2) Maintenance – what to Expect</li> </ul> </li> <li>C. Preflighting the gear</li> <li>D. Preventative Maintenance – The Importance of Proper Rigging</li> <li>E. Emergency Extension</li> </ul> <p><b>3. Fuel System</b></p> <ul style="list-style-type: none"> <li>A. How the system works</li> <li>B. Maintenance Requirements</li> <li>C. Preflighting the Fuel System</li> <li>D. Preventative Maintenance</li> <li>E. Normal &amp; Emergency Operations</li> </ul> <p><b>4. Electrical System</b></p> <ul style="list-style-type: none"> <li>A. System Components</li> <li>B. Normal Operation</li> <li>C. Routine Inspection &amp; Maintenance</li> <li>D. Potential Malfunctions</li> <li>E. AD's and SB's</li> </ul>	<p><b>5. Environmental Systems</b></p> <ul style="list-style-type: none"> <li>A. How the Systems Work</li> <li>B. Normal Procedures</li> <li>C. Inspection &amp; Maintenance Requirements</li> <li>D. Areas Prone to Malfunction</li> <li>E. AD's and SB's</li> </ul> <p><b>6. Flight Controls</b></p> <ul style="list-style-type: none"> <li>A. System Review</li> <li>B. Common Problems – rigging, cable tension, lubrication</li> <li>C. Flap System</li> <li>D. Routine Inspection &amp; Maintenance</li> <li>E. Areas of Special Concern</li> </ul> <p><b>7. Type Certificate Data</b></p> <ul style="list-style-type: none"> <li>A. 310 through 310R</li> <li>B. 320 through 340A</li> <li>C. 400 Series</li> <li>D. T303</li> </ul> <p><b>8. Corrosion</b></p> <ul style="list-style-type: none"> <li>A. What it is</li> <li>B. Most Common Areas Affected</li> <li>C. Allowable Limits</li> <li>D. Prevention &amp; Treatment</li> </ul>
---	---